

Vine & Branch Inc.



CONSULTING NEWS

Arboricultural and Horticultural Consulting



"I frequently tramped eight or ten miles through the deepest snow to keep an appointment with a beech tree, or a yellow birch, or an old acquaintance among the pines."

- Henry David Thoreau

INSIDE:

ARBORICULTURAL CONSULTING SERVICES	2
HORTICULTURAL CONSULTING SERVICES	3
AWARDS & RECOGNITION	4
CONSULTING PROJECTS	4



National Arbor Day Foundation *Building With Trees* Award Winner

The staff at Vine & Branch is pleased to be of service to you. Our team includes a Registered Consulting Arborist, a Registered Landscape Architect, seven Certified Arborists, an Indiana Master Horticulturist, and three Licensed Plant Healthcare Specialists all ready to provide their expertise.

We strive to provide you answers as "**Consultants to the Professionals**". We have earned many acknowledgements and awards as a result of our efforts to preserve trees on building sites and to maintain safe working environments. Certainly our company stands tall among the competition because our clients can expect quality and personalized service from qualified, educated specialists. In the following pages are some examples and descriptions of services we offer. For more plentiful and thorough information please visit our website, www.vineandbranch.net or call for an appointment with one of our many experts.



4721 E. 146th St.
Carmel, IN 46033
(317) 846-3778
Fax: (317) 846-3788
www.vineandbranch.net

Consultants to the Professionals!

Arboriculture Arboriculture

Arboricultural Consulting Services:

- Tree & Shrub Appraisal
- Tree Preservation Planning
- Tree Inventories/Maintenance Plans
- Woodland Analysis & Management
- Lightning Protection Consultation
- Expert Witness Services
- Arboricultural Dispute Resolution
- Visual Tree Assessment
- Zoning & Open Space Consultation

Plant Appraisal

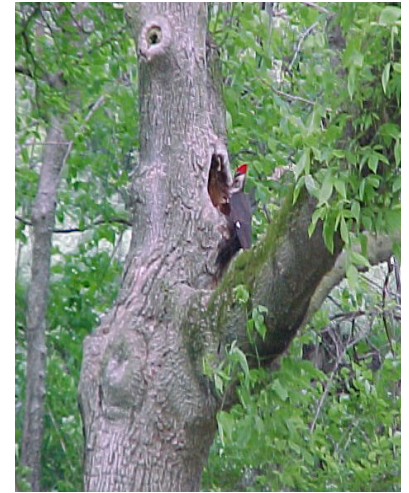
Americans spend billions of dollars annually on their lawns and gardens. When you need to know the value of a tree, whether for **litigation purposes** or for **preconstruction planning**, give us a call.



This tree near a sidewalk endangers those passing by.

Tree Preservation

Preservation is important because trees add grace and beauty to landscapes, provide shade and protection and also increase property values. Changing the environment around trees causes them a great deal of harm and stress. In wooded areas trees live in harmony, protecting and supporting each other; when woods become yards, trees must adapt to the environment. **The goals of tree preservation are to lessen the impact of construction and decrease the expense of long-term maintenance.** Because tree preservation begins before construction, we recommend that you involve an arborist in the planning process.



Tree preservation maintains wildlife habitat for this Pileated woodpecker.

Visual Tree Assessment

Vine & Branch has developed an award-winning Visual Tree Assessment program to assist property owners with their trees. We have been recognized by the Tree Care Industry Association with three national awards for our contribution to public safety. Call us today to discuss your property and any individual needs that you may have.



Our goal is to assess your property and to set up a long term program to keep you and the general public safe.

Premises Liability

Property owners, project managers and others are responsible for ensuring the safety of others while on the property. In Indiana there is a legal *"duty...to perform periodic inspections"* of your trees, which means that if you don't have these inspections performed you could be setting others up for injury and leaving yourself open to lawsuits.

Call Vine & Branch to discuss your need for an inspection to help you to limit your risk of liability and increase public safety.

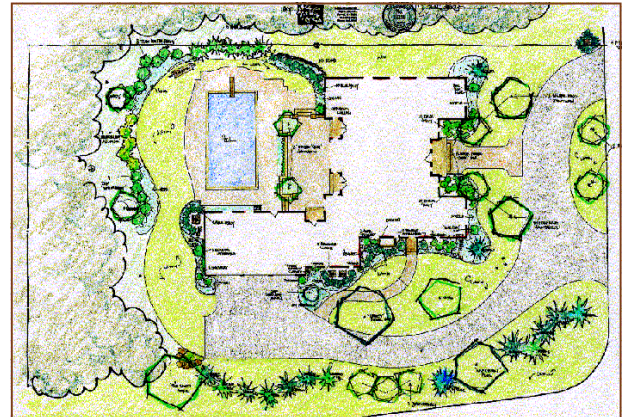
*If you would like a copy of our white paper on Premises Liability so that you can become more fully-informed about your responsibilities and courses of action to take, please feel free to email us at Treeconsultant@vineandbranch.net to request your copy.



Check us out on the Web! www.vineandbranch.net

Improve Your Landscape Planning Process

Landscaping is typically the last phase of a construction project to be completed, yet it's the first to be noticed. First impressions can make or break the success of a project. The key to any landscaping project is planning. Landscape plans should be reviewed to determine if specified plants are available and will thrive on a particular site. While a plant may generally do well for certain criteria, some location-specific issues and/or micro environments can affect the health and success of the plant.



Proper Planting Analysis

After plants have been located, the planting process must be staged and performed correctly to provide the plants the best opportunity to establish. During the installation and upon completion of the installation, inspections should be performed to determine that:

- proper practices are observed
- no improper/unauthorized plant substitutions were made
- proper soil preparation was performed
- the overall installation was performed according to specification

Management Plans

Proper maintenance is integral to a project's continued success. **Certain practices that have been industry standards are now being reevaluated.** No landscape maintenance plan can fit every landscape project or be timeless. All maintenance is site-specific and dynamic in nature. Call Vine & Branch to improve your overall landscape process.

Horticulture Horticulture

Horticultural Consulting Services:

- Plant Health Care Consultation
- Landscape Plan Review
- Project Management
- Plant Inventory
- Proper Planting Analysis
- Management Plans



Create unique trails to enjoy and learn about nature's beauty.

Woodland Analysis

Woodland Evaluations are used for project planning, property management and determining compliance with local ordinances. Reports can include inventories of trees, plants and animals, detailed habitat descriptions, maps and aerial photos, photo documentation, and management recommendations. We use this data to propose plans to help you achieve your goals. We can then create a detailed management plan including tasks, schedules, equipment and materials.

Each generation takes the earth as trustees. We ought to bequeath to posterity as many forests and orchards as we have exhausted and consumed.

- J. Sterling Morton

Trail Development

The first step in developing trails on property is a consultation to determine the vision of the client. From there much research is required, including the site's natural history of trees, plants, animals, soils and hydrology. Site inspections are performed to determine the feasibility of the project and explore options for creative, personalized designs. All options are evaluated in order to select which ones best fit the goals of the project. Upon approval of the plan, the interpretive trails are installed with unique and informative signs. Trails can be updated as preferences and site conditions evolve in order to preserve both the client's vision and the site's natural beauty.

Call for an appointment! 317.846.3778





Vine & Branch Inc.

National Recognition

- Tree Care Industry Association *Safety Awards* for Visual Tree Assessment program
- American Landscape Contractors Association *Safety Award*
- National Arborist Association *Tree Maintenance Excellence Award*
- National Arbor Day Foundation *Building With Trees Awards*
- National Arborist Association *Excellence in Arboriculture Award of Distinction for Construction Site Tree Preservation*
- The International Society of Arboriculture *Gold Leaf Award*
- American Horticultural Society *Environmental Award*

Local Recognition

- Angie's List *Super Service Awards*
- City of Carmel *How To Plant a Tree Video*
- St. Margaret's Guild Decorators Show House *Maggie Award*
- Orchard in Bloom *People's Choice Awards*
- Carmel Clay Chamber of Commerce *Applause Award*

Consulting Projects

- City of Carmel — Arboricultural Consulting
- City of Batavia — Arboricultural Consulting
- City of Crawfordsville — Arboricultural Consulting
- Clay Township Trustee — Horticultural Analysis
- Country Club of Indianapolis — Dispute Mediation
- Crown Hill Cemetery — Tree Preservation Planning
- Indianapolis Art Center — Tree Preservation Planning
- Langston Development, Brookside — Tree Preservation Planning
- Lauth Property Group — Horticultural Consultations
- Lerchen Homes — Tree Preservation
- Miller Pipeline — Tree Appraisal, Mediation
- Platinum Properties — Woodland Analysis
- Pulte of Indiana — Britton Falls, Tree Preservation Planning
- The Orchard School — Tree Preservation
- Town of Edgewood — Horticultural Consulting
- Town of Meridian Hills — Arboricultural Consulting

Check us out on the Web!
www.vineandbranch.net



Vine & Branch Consulting Services

4721 E. 146th Street
Carmel, IN 46033
(317) 846-3778
www.vineandbranch.net



Preserving Today's Trees for Tomorrow's Children

